

# PRODUCT INFORMATION PACKET

Model No: 145TTFR16073

Catalog No: GT5507

2 HP Close-Coupled Pump Motor, 3 phase, 1800 RPM, 575 V, 145JPV Frame, TEFC  
JP Motors



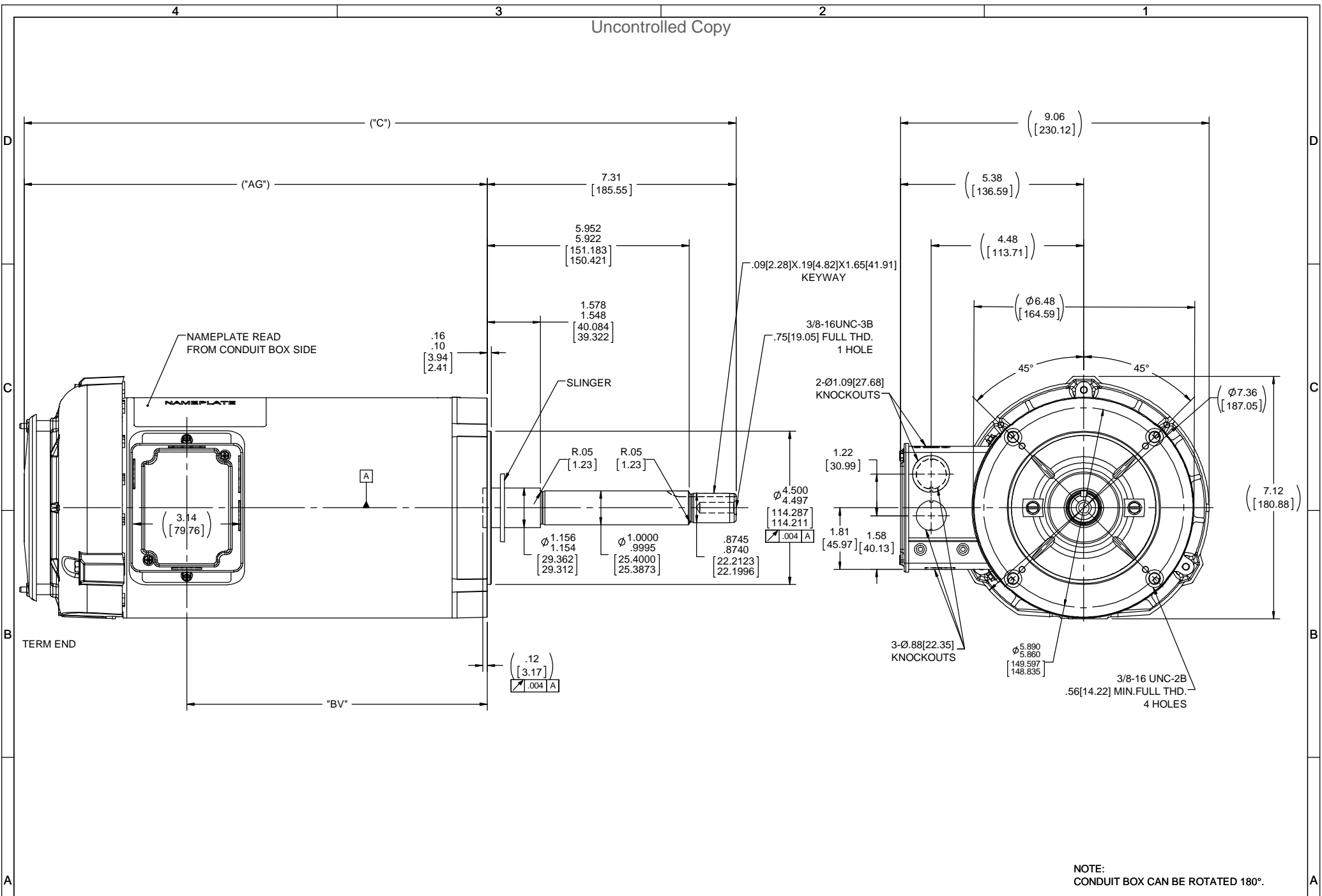
### Nameplate Specifications

|                        |                   |                            |                                    |
|------------------------|-------------------|----------------------------|------------------------------------|
| Output HP              | <b>2 Hp</b>       | Output KW                  | <b>1.5 kW</b>                      |
| Frequency              | <b>60 Hz</b>      | Voltage                    | <b>575 V</b>                       |
| Current                | <b>2.4 A</b>      | Speed                      | <b>1760 rpm</b>                    |
| Service Factor         | <b>1.15</b>       | Phase                      | <b>3</b>                           |
| Efficiency             | <b>86.5 %</b>     | Power Factor               | <b>71</b>                          |
| Duty                   | <b>Continuous</b> | Insulation Class           | <b>F</b>                           |
| Design Code            | <b>A</b>          | KVA Code                   | <b>N</b>                           |
| Frame                  | <b>145JPV</b>     | Enclosure                  | <b>Totally Enclosed Fan Cooled</b> |
| Thermal Protection     | <b>No</b>         | Ambient Temperature        | <b>40 °C</b>                       |
| Drive End Bearing Size | <b>6206</b>       | Opp Drive End Bearing Size | <b>6203</b>                        |
| UL                     | <b>Recognized</b> | CSA                        | <b>Y</b>                           |
| CE                     | <b>Y</b>          | IP Code                    | <b>43</b>                          |

### Technical Specifications

|                       |                                     |                       |                         |
|-----------------------|-------------------------------------|-----------------------|-------------------------|
| Electrical Type       | <b>Squirrel Cage Inverter Rated</b> | Starting Method       | <b>Line Or Inverter</b> |
| Poles                 | <b>4</b>                            | Rotation              | <b>Reversible</b>       |
| Resistance Main       | <b>6.58 Ohms</b>                    | Mounting              | <b>Round</b>            |
| Motor Orientation     | <b>Horizontal Or Shaft Down</b>     | Drive End Bearing     | <b>Ball</b>             |
| Opp Drive End Bearing | <b>Ball</b>                         | Frame Material        | <b>Rolled Steel</b>     |
| Shaft Type            | <b>JP</b>                           | Overall Length        | <b>20.85 in</b>         |
| Frame Length          | <b>9.56 in</b>                      | Shaft Diameter        | <b>0.875 in</b>         |
| Shaft Extension       | <b>7.31 in</b>                      | Assembly/Box Mounting | <b>F1 ONLY</b>          |
| Connection Drawing    | <b>A-EE7300</b>                     | Outline Drawing       | <b>B-108643-956</b>     |

This is an uncontrolled document once printed or downloaded and is subject to change without notice. Date Created:20/01/2021



NOTE:  
CONDUIT BOX CAN BE ROTATED 180°.

| DASH NO. | "C"           | "AG"          | "BV"         |
|----------|---------------|---------------|--------------|
| 956      | 20.90[530.86] | 13.59[345.18] | 8.82[224.02] |

|   |             |      |   |   |
|---|-------------|------|---|---|
| DRAWING REVISION<br>A   | REVISION BY | DATE | TOLERANCES UNLESS OTHERWISE SPECIFIED:<br>DEC. INCH mm ANGLE<br>.XX ±0.1 [2.5] ±7 30°<br>.XX ±0.02 [0.51]<br>.XXX ±0.005 [0.127]<br>.XXXX ±0.0005 [±0.0127] | DRAWN BY<br>A. KEETHA                                 |
| ECO-0136108   | APPROVED BY | DATE | REMOVE BURRS & BREAK SHARP EDGES: .0031 [.0762/381] X 45°<br>CORNER FILLETS: R.02 [51]<br>MACHINED SURFACES: 200/5.1 INCH/mv<br>mm SHOWN IN [BRACKETS]      | DATE<br>02/27/2018                                    |
| ECO DESCRIPTION<br>OUTLINE CONVERSION PROJECT<br>COPYRIGHT REGAL BELOIT AMERICA, INC. ALL RIGHTS RESERVED.<br>PROPRIETARY AND CONFIDENTIAL INFORMATION. THIS DOCUMENT IS THE PROPERTY OF REGAL BELOIT AMERICA, INC. OWNERSHIP AND CONTAINS OWNERS PROPRIETARY INFORMATION. ANY PERSON, CORPORATION OR OTHER FIRM RECEIVING IT IS DEEMED BY RECEIVING IT, TO AGREE THAT IT, AND/OR ANY PART OF IT, SHALL NOT BE DISCLOSED TO ANY PERSON, CORPORATION OR OTHER ENTITY, DUPLICATED, AND/OR USED, EXCEPT AS EXPRESSLY APPROVED IN WRITING IN ADVANCE BY OWNER. THIS DOCUMENT SHALL BE RETURNED TO OWNER UPON REQUEST. IT MAY BE SUBJECT TO CERTAIN RESTRICTIONS UNDER APPLICABLE EXPORT CONTROL LAWS AND REGULATIONS. |             |      | APPROVED BY<br>PST  | DESCRIPTION<br>OUTLINE<br>140 FRAME-1Ø-BB-C'FACE-TEFC |
|   |             |      |   | DATE<br>05/18/2018                                    |
|   |             |      |   | REFERENCE<br>100659                                   |
|   |             |      |   | MATERIAL<br>140 FRAME-1Ø-BB-C'FACE-TEFC               |
|   |             |      |   | PROCESS/FINISH  |
|   |             |      |   | THIRD ANGLE PROJECTION                                |
|   |             |      |   | SIZE<br>C   |
|   |             |      |   | DRAWING NUMBER<br>108643                              |
|   |             |      |   | SHEET<br>1 OF 1                                       |

**THREE PHASE - SINGLE VOLTAGE  
MOTOR - CONDUIT BOX @ 'A'**

**TO REVERSE ROTATION:  
INTERCHANGE ANY TWO  
LINE LEAD CONNECTIONS.**

**TERMINAL BLOCK WHEN SPECIFIED**



**VIEW OF TERMINAL END**

**IF MOTOR HAS  
6 LEADS**



A-9806 DECAL

**OPTIONAL CORD  
CONNECTION**

- L1 \_\_\_\_\_ WHITE
- L2 \_\_\_\_\_ RED
- L3 \_\_\_\_\_ BLACK

|   |                    |                    |
|---|--------------------|--------------------|
| DRAWING REVISION<br>AB  | REVISION BY<br>JJB | DATE<br>06-27-2017 |
| ECO<br>ECO-0125361  | APPROVED BY<br>TB  | DATE<br>06-27-2017 |
| ECO DESCRIPTION<br><b>UPDATED TO CURRENT STANDARDS</b>  |                    |                    |
| <small>COPYRIGHT REGAL BELOIT AMERICA, INC. ALL RIGHTS RESERVED.<br/>                 PROPRIETARY AND CONFIDENTIAL INFORMATION - THIS DOCUMENT IS THE PROPERTY OF<br/>                 REGAL BELOIT AMERICA, INC. ("OWNER") AND CONTAINS OWNER'S PROPRIETARY<br/>                 INFORMATION. ANY PERSON, CORPORATION OR OTHER FIRM RECEIVING IT IS DEEMED,<br/>                 BY RECEIVING IT, TO AGREE THAT IT, AND/OR ANY PART OF IT, SHALL NOT BE DISCLOSED<br/>                 TO ANY PERSON, CORPORATION OR OTHER ENTITY, DUPLICATED, AND/OR USED, EXCEPT<br/>                 AS EXPRESSLY APPROVED IN WRITING IN ADVANCE BY OWNER. THIS DOCUMENT SHALL<br/>                 BE RETURNED TO OWNER UPON REQUEST. IT MAY BE SUBJECT TO CERTAIN<br/>                 RESTRICTIONS UNDER APPLICABLE EXPORT CONTROL LAWS AND REGULATIONS.</small> |                    |                    |



|                           |
|---------------------------|
| DRAWN BY<br>DA            |
| DATE<br>03-26-1993        |
| APPROVED BY<br>TB         |
| DATE<br>03-26-1993        |
| REFERENCE                 |
| THIRD ANGLE<br>PROJECTION |

|                            |                                 |  |
|----------------------------|---------------------------------|--|
| Regal Beloit America, Inc. |                                 |  |
|                            |                                 | DESCRIPTION<br><b>CONNECTION DIAGRAM</b><br>EXTERNAL - SINGLE VOLTAGE - 3Ø MOTOR |
| MATERIAL                   | PROCESS/FINISH                  |  |
| SIZE<br><b>A</b>           | DRAWING NUMBER<br><b>EE7300</b> | SHEET<br>1 OF 1  |



P.O. BOX 8003  
WAUSAU, WI 54401-8003  
PH. 715-675-3311

DATA VOLTS: 460

CERTIFICATION DATA SHEET

CUSTOMER: \_\_\_\_\_  
 ORDER #: \_\_\_\_\_  
 CONN. DIAGRAM: A-E/7300  
 WINDING: B-100659-956  
 SPEED: \_\_\_\_\_ ZT4255 FR 4  
 CUSTOMER P.O. #: \_\_\_\_\_  
 REFERENCE MODEL #: 145TTR16073  
 CAT #: G15507  
 CUSTOMER PART #: \_\_\_\_\_  
 MOUNTING: F1 ONLY

TYPICAL MOTOR PERFORMANCE DATA

|    |             |          |                 |                  |           |      |          |        |                   |
|----|-------------|----------|-----------------|------------------|-----------|------|----------|--------|-------------------|
| HP | KW          | SYNC RPM | FL RPM          | FRAME            | ENCLOSURE | TYPE | KVA CODE | DESIGN |                   |
| 2  | 1.5         | 1800     | 1760            | 145UPV           | TEFC      | TFR  | N        | A      |                   |
| PH | HZ          | VOLTS    | AMPS            | START TYPE       | DUTY      | INSL | S.F.     | AMB    | ELEV.             |
| 3  | 60          | 575      | 2.4             | LINE OR INVERTER | CONT      | F    | 1.15     | 40     | 3300              |
|    | F.L. EFF    |          | 3/4 LD EFF      |                  |           |      |          |        | ELECT. TYPE       |
|    | 86.5        |          | 86.5            |                  |           |      |          |        | SO CAGE INV RATED |
|    | F.L. PF     |          | 3/4 LD PF       |                  |           |      |          |        |                   |
|    | 71.0        |          | 62.0            |                  |           |      |          |        |                   |
|    | F.L. TORQUE |          | LR AMPS @ 460 V |                  |           |      |          |        | F.L. RISE (° C)   |
|    | 6.0 LB-FT   |          | 24.4            |                  |           |      |          |        | 45                |
|    | @ 3 FT.     |          | POWER           |                  |           |      |          |        |                   |
|    | 62 DBA      |          | 71 DBA          |                  |           |      |          |        |                   |
|    |             |          | ROTOR WK²       |                  |           |      |          |        |                   |
|    |             |          | 0.14 LB-FT²     |                  |           |      |          |        |                   |
|    |             |          | MAX. LOAD WK²   |                  |           |      |          |        |                   |
|    |             |          | 12 LB-FT²       |                  |           |      |          |        |                   |
|    |             |          | SAFE STALL TIME |                  |           |      |          |        |                   |
|    |             |          | 15 SEC.         |                  |           |      |          |        |                   |
|    |             |          | STARTS/HOUR     |                  |           |      |          |        |                   |
|    |             |          | 2               |                  |           |      |          |        |                   |
|    |             |          | MOTOR WGT       |                  |           |      |          |        |                   |
|    |             |          | 65 LB.          |                  |           |      |          |        |                   |

\*\*\* SUPPLEMENTAL INFORMATION \*\*\*

|                 |                  |              |                    |              |                        |                |         |               |
|-----------------|------------------|--------------|--------------------|--------------|------------------------|----------------|---------|---------------|
| DE BRACKET TYPE | ODE BRACKET TYPE | MOUNT TYPE   | MOTOR ORIENTATION  | SEVERE DUTY  | HAZARDOUS LOCATION     | DRIP COVER     | SCREENS | PAINT         |
| C-FACE          | STANDARD         | ROUND        | ZONITAL OR SHAFT D | NO           | NONE                   | YES            | NONE    | BLUE (POWDER) |
| BEARINGS        | GREASE           | SHAFT TYPE   | SPECIAL DE         | SPECIAL ODE  | SHAFT MATERIAL         | FRAME MATERIAL |         |               |
| DE ODE          |                  |              |                    |              |                        |                |         |               |
| BALL BALL       | POL.YREX EM      | JP           | NONE               | NONE         | 144 STRESSPROOF (C-22) | ROLLED STEEL   |         |               |
| 6206 6203       |                  |              |                    |              |                        |                |         |               |
| THERMOSTATS     | PROTECTORS       | WDG RTD's    | BRG RTD's          | THERMISTORS  | CONTROL                | SPACE HEATERS  |         |               |
| NONE            | NOT              | NONE         | NONE               | NONE         | FALSE                  | NA             |         |               |
| R1 (ohms/ph)    | R2 (ohms/ph)     | X1 (ohms/ph) | X2 (ohms/ph)       | Xm (ohms/ph) | VIBRATION (in/sec)     | FLOAT ODE      |         |               |
| 6.19            | 4.704            | 8.986        | 9.274              | 250.541      | 0.150                  |                |         |               |

|                                 |  |  |
|---------------------------------|--|--|
| *<br>N<br>O<br>T<br>E<br>S<br>* | INVERTER TORQUE: CONSTANT 2:1<br>INV. HP SPEED RANGE: NONE |  |
|                                 | ENCODER: NONE  |  |
|                                 | BRAKE: NONE  |  |
|                                 | FT-LB: NA  |  |
|                                 | VOLTAGE: NONE  |  |
|                                 | UL: V-INS, CONST UL REC                                    |  |

PREPARED BY: EARL BABBITTS  
 DATE: 13-07-17  
 FORM: 3531 REV. 4 2/27/06

